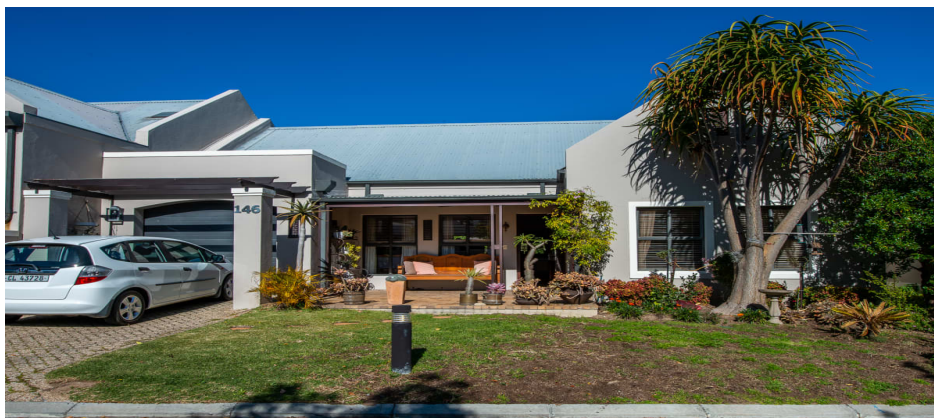


# Jamestown



Retire in style in this north facing home.



**R 4 500 000**

**Web Ref: 11285**

When you enter the house you are welcomed into the open plan kitchen and dining/living areas. The study area can be study or dining area. Both the spacious bedrooms have built in cupboards and its own bathroom.

The patio has been closed as an extra TV room. The laundry area is in the garage to keep noise away. Come and experience retirement at its best.

The stylish, modern clubhouse is at the heart of the community at La Clemence. Overlooking majestic views from the north-facing terrace, this hub of activity houses an administration office; lounge; television room; library; dining room and intimate function room.

Complete frail care, assisted living, communal dining and an active social environment are all well-known features of this successful retirement estate.

Contact me today to arrange a viewing.

## Features:

Air Conditioner, Blinds, Window Frames Aluminum, Paved Washing Line Area, Security Gates & Walls, Security Lights, Burglar Bars / Beams, Heating Wall Panels, Architect's Design, Pool in Complex, Trellidors, 24-Hour Manned Security, Security Fence, Open Parking, Patio, Entrance Hall, Laundry Area

## Rooms:

2 Bedrooms

2 Bathrooms

Garage

2 Living Areas

Kitchen

## Property Details:

Floor Size: ± 148 m<sup>2</sup>

Plot Size: ± 239 m<sup>2</sup>

Marina Klopper

Telephone:

021 887 4740

Mobile:

082 557 0864

Whats App:

082 557 0864



Levy: R 4 360

Rates and Taxes: R 804